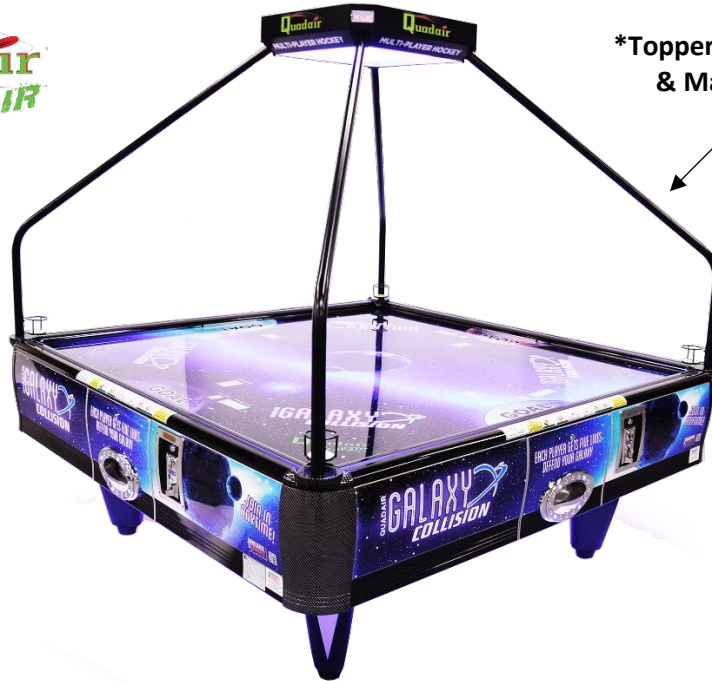




Customizing Family Fun™



*Topper with LED Lights & Mallet Holders

SKU#: 3207545-QAT

QuadAir Hockey Table Topper Instruction Manual

Assembly, Operation, and Care Instructions

Serial #: _____

Distributed By: _____

Sales Person: _____

Technical Service #: +1-716-866-0054

Inspect Immediately after Transporting the Product

After receiving the shipment, inspect the product thoroughly to ensure that it has been shipped with care. Before turning the power on, please check the following:

- Check the unit for damage or shifting that may have occurred during shipping. Are there any dented portions or defects (cuts, etc.) on the external surfaces of the cabinet?
- Do the power supply voltage and frequency requirements meet with those of the location (110V/220V)?
- Are all wires linked correctly and securely connected to each other? If coupled in an incorrect manner, the connection will not be made accurately and it could cause not only irreparable damage to the machine, but also is a potential fire hazard. **DO NOT INSERT CONNECTORS FORCIBLY.**
- Check that the all the cables, including power cables, are undamaged. Do power cables or other wires have any splices, cuts, or dents?
- Have you been provided with all of the associated accessories? Tip: Most of the pieces required to assemble the table are shipped within the table. Use your table key to unlock the table and check parts for damage or other problems.



Safety Instructions



- This equipment may contain hazardous voltage which can cause electrical shock. Only **qualified personnel*** should work inside the equipment.
*Note: Keep reading for a list of qualified personnel.

- To maintain personal safety and the safe operation of this product, read the entire manual before using it. The following instructions are intended for the users, operators, and the personnel in charge of the operation of the machine. **Be sure to keep this manual close to the product or in a convenient place for future reference.**



IMPORTANT NOTICE

- This product is intended for indoor use only
- This is NOT a child's toy; adult supervision is required for children to play this game. Children under 120cm (roughly 4ft) in height should not approach the table while it is in use, as this could be hazardous.
- Do not sit, climb, or lean on the table. Do not place anything, including people, on the top of the playfield.
- Do not drag the table when moving it, as this could damage the legs, levelers, or unit beyond repair.
- Do not place any food or drinks on the table. Use cup holders, if provided.
- This game features flashing lights which may not be suitable for photosensitive epilepsy.

Definition of Site Maintenance Personnel or Other Qualified Individuals



WARNING

Servicing and maintenance work of the contents herein stated should be performed by the *SERVICEMAN* stipulated as per IEC Standard. Those who do not have technical expertise and knowledge other than the *SERVICEMAN* are not allowed to perform the work herein stated. Executing the aforementioned work by such non-technical personnel can cause serious accidents that may endanger life.

Replacing parts, maintenance inspections, and troubleshooting should be carried out by **Site Maintenance Personnel** or other **Qualified Professionals**. This manual includes directions for potentially dangerous procedures which should only be performed by professionals with appropriate and specialized knowledge.

The **Site Maintenance Personnel** or other **Qualified Professionals** mentioned in this manual are defined as follows:

- **Site Maintenance Personnel:** Individuals with experience in maintaining amusement equipment, vending machines, etc., working under the supervision of the owner and/or operator of this product. Maintenance Personnel frequently service machines within amusement facilities or similar premises by carrying out everyday procedures such as: assembly, maintenance inspections, and replacement of units or replaceable parts.
 - **Actions Approved for Site Maintenance Personnel:** Machine assembly, maintenance inspection, and replacement of units or replaceable parts.
- **Other Qualified Professionals:** Personnel employed by the amusement equipment manufacturer. Personnel may also have been involved in design, production, testing, or maintenance of said amusement equipment. This individual should have either graduated from a technical school or hold similar qualifications in electrical, electronics, or mechanical engineering.
 - **Actions Approved for Other Qualified Professionals:** Assembly, maintenance, inspection, and replacement of units or replaceable parts for amusement equipment and/or vending machines, including repair or adjustments of electrical, electronic, or mechanical parts.

Before Using This Product

Please be sure to read the following before using this machine, in order to ensure the safe operation of this product. The following instructions are intended for users, operators, and personnel in charge of the operation and maintenance of the machine. After carefully reading and sufficiently understanding the warning displays and cautions, please handle the machine appropriately. Be sure to keep this manual for future reference.

Qualified Personnel: Only personnel who have technical expertise should perform the work stated herein to avoid hazardous situations. The instructions state that site maintenance personnel should be the only personnel performing work. Please perform maintenance work in accordance with the stated instruction; provided instructions for maintenance work are to minimize risk and prevent accidents. Failing to perform work as stated within the Instruction Manual may potentially be dangerous to both maintenance personnel and users.

- **Be sure to turn off the power before working on the machine.** To prevent electric shock, be sure to turn the power off before carrying out any work that requires direct contact with the interior of the product. If the work is to be performed in the power-on status, the Instruction Manual will state to do so.
- **Be sure to ground the Earth Terminal.** This is not required in the case where a power cord with earth/ground is used.
- **Ensure the power supply used is equipped with an Earth Leakage Breaker.** This product does not incorporate an Earth Leakage Breaker. Using a power supply which is not equipped with an Earth Leakage Breaker can cause a fire when or if earth leakage occurs.
- **Before installing the product, check for electrical specifications; the product must meet the requirements.** Ensure the product is compatible with the power supply voltage and frequency requirements of the location. Using any electrical specifications that are different from the designated specifications can cause a fire and/or electric shock.
- **Install and operate the product where appropriate lighting is available, allowing warning and safety labels to be read clearly.** To ensure customer safety, labels and printed instructions describing potentially hazardous situations are applied to places where risk for potential accidents are increased.

If any label is peeled off, apply it again immediately. Please contact Barron Games Technical Support at 1+716-866-0054 or email service@barrongames.com if you are in need of new stickers or parts. Visit www.BarronGames.com for more information about Barron Games' Parts and Service Department.



ASSEMBLY NOTES

- Read this Instruction Manual carefully before assembling.
- Ensure that there is sufficient space to place and shift the product prior to assembly
- **FOUR strong adults** are recommended to assemble the topper.
- Inspect and ensure all parts are securely.
- **Please Note:** Children and pets should be kept away from assembly and game pieces; this table contains small parts and balls that could be a potential choking hazard.
- **DO NOT TAP POWER TO THE TABLE.** All card swipe and table accessories (including toppers) must be powered independently.



TOOLS NEEDED



- **Instruction Manual with Step-by-Step Assembly**



- **Screw Driver or Drill**



- **Scissors**



- **QuadAir Door Key (located inside the table)**

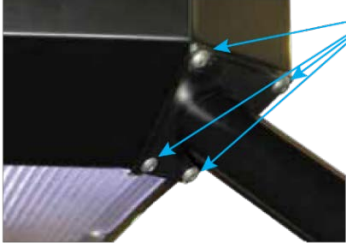


- **Allen Key (included with optional topper kit)**

*Note: Please retain the original packaging, so that it may be used for storage or transport later.

Installing the Optional QuadAir LED Topper

1. Carefully remove the topper from the packaging.
2. Located the power cord coming from the Topper Light Assembly. Feed the power cord through one of the Metal Support Arms (the power cord should come out of the end with the round bracket on it).
3. Connect all 4 support arms to the Topper Light Assembly. Insert 4 bolts into each of the brackets and tighten with the included allen wrench.



Insert 4 Bolts into Topper Light Assembly holes and tighten.

4. Install the Mallet Holders onto each of the Metal Support Arms. There are two bolts for each mallet holder that need to be installed.



Insert 2 Bolts into the Metal Support Arm holes and tighten.

5. You will need to remove the old corners and replace them with the new corners provided in the LED Topper kit.
 - a. Start by removing the rubber trim from the table.
 - b. Loosen the rails to remove the original corners. You will need to remove bolts from corner and metal corner support.
 - c. Now put the new LED Topper corners on with the bolts from the original mallet holder corner. Next retighten the rails.
 - d. Next put back the rubber trim. You will need to cut the rubber to fit in between the corners. You can use the LED Topper as a guide or measure from the edge of the rail.

6. You will need 4 people for this next step. Each person will grab a support arm and lift the entire LED Topper onto the QuadAir table. Make sure to run the LED topper power cord through the hole on the corner piece before you set the topper down.



7. Once the entire topper assembly is on the table insert the 4 bolts into the LED Topper Corner Piece



Insert 4 Bolts into the LED Topper Corner Piece.

Cut the rubber trim to end 1/4" inside the edge of the metal bracket.

DO NOT TAP POWER TO THE TABLE.

All card swipe and table accessories (toppers) must be powered independently.

Care and Maintenance

1. Use a soft cloth, and product-specific polishing spray to clean the unit. **THE PLAYFIELD SHOULD BE CLEANED WITH APPROVED HOCKEY TABLE POLISH ONLY.**
2. Household cleaner may be used to wipe down the poles, side panels, and legs.
3. Perform maintenance work in accordance with these instructions. **Be sure to always turn off the power before servicing the machine.**



Customizing Family Fun™

**Barron Games International
84 Aero Drive, Suite 5
Buffalo, NY 14225**

**Phone: 1+716-866-0054
Fax: 1+716-630-0055**

www.BarronGames.com



U.S. Patent No. 8,025,293 (issued Sept. 27, 2011)

For Parts and Service Information, please contact us:

phone: 1+716-866-0054

email: Service@BarronGames.com